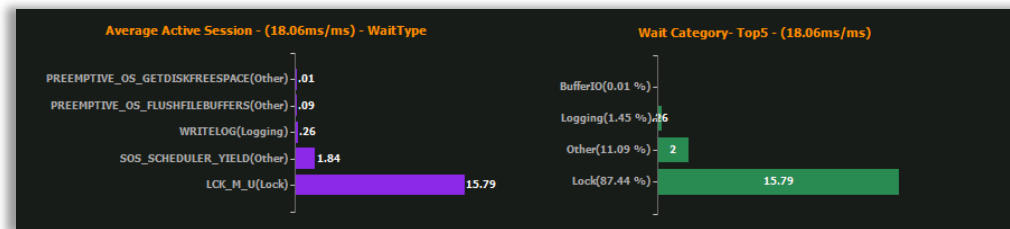
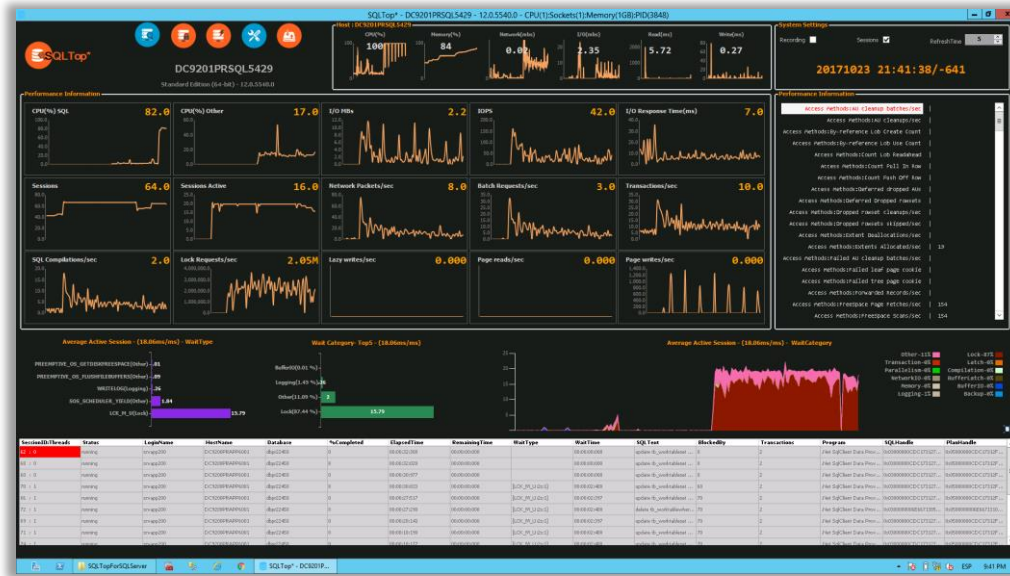




SQLTop\* is a comprehensive database performance monitoring and analysis solution for Database Administrators. SQLTop\* provide global view of SQL Server, helps to identify issues and eliminates performance bottlenecks, improves response time for analysis and root cause detection, and reduces overall cost of monitoring tools.

## Reactive Response Time

Focus on response time to analyze performance problems, it focuses on instance main performance components, finding the root causes of delays inside of database engine, analyze waits statistics, performance counters trends and collect session information.



## Wait Statistics Historical Trend

Download a free product trial and start monitoring your environment in minutes.



[www.sqltop.com/download/](http://www.sqltop.com/download/)

## Features

### Lightweight Platform

SQLTop\* simplify SQL Server health check and review workload on your system right away using lightweight architecture.

### Everything in one single screen

OS Infrastructure and SQL Server can be reviewed in just one screen to give you a view of your environment's overall performance.

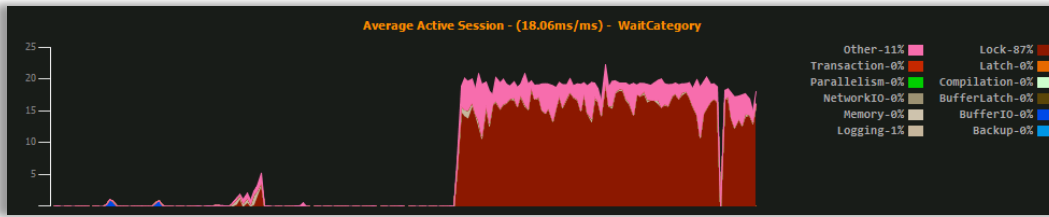
### Rapid Performance Analysis

SQLTop\* helps you to identify issues quickly, by easily reviewing waits stats, server resources, performance counters and active sessions, administrators can response faster for addressing issues.

## Technical Specifications

- + .NET Framework 4 or later
- + No Software Installation required.
- + View Server State permissions.
- + Monitored Instances: SQLServer 2005, 2008, 2012, 2014, 2016.

SQLTop\* captures multiple dimensions of server wait statistics, SQLTop\* is unique because it analyzes on real time performance counters, waits stats and sessions, it explains why database engine response is slow. The graphical display makes it easy for anyone, Database Administrators, Managers, and Developers.



## Portability and OS Integration

SQLTop\* doesn't require installation, complex configuration and server repositories. It's just one executable running over pure .NET Framework using lightweight architecture and components to avoid any overhead on database engine systems. Just few seconds after executing SQLTop\* you will identify root cause about performance issues, compare OS and Engine at process level (CPU, Memory, IO, Thread, etc.).



## Session and SQL Analysis

SQLTop\* captures sessions on real-time, provide a quick view about current sessions and what they are waiting for, extract SQL Statistics and find any missing index from SQL Plan Cache.

